



9th Annual

# Celebration *of* Scholarship

Undergraduate Conference

March 28 & 29, 2013



 Shawnee State  
UNIVERSITY

 USEC  
A Global Energy Company

[www.shawnee.edu/cos](http://www.shawnee.edu/cos)

Welcome to the ninth annual "Celebration of Scholarship" at Shawnee State University.

The Celebration of Scholarship is a special opportunity for us to showcase academic, creative, and research projects. Students and their faculty mentors have spent countless hours examining ideas, creating works of art, testing



hypotheses, or presenting other methods to stimulate thinking and discussion. Over the next two days, these young scholars are taking an important step in their intellectual development by presenting their work for examination and criticism by their peers and others.

The presentations you will hear during the event are a testament to the substance, value, and importance undergraduate research plays in preparing individuals for rewarding careers. Today, you will meet the thinkers, the innovators, and the dreamers who together will help shape a brighter future for all of us in this region.

None of our student successes would be possible without the mentoring and support of the University's faculty. In their classrooms they inspire students to continually strive for excellence. Their mentoring of conference participants is what makes SSU a special place to learn and grow.

The conference is the result of the hard work of SSU faculty and staff members who have organized this event. We thank them for their leadership and commitment.

Shawnee State is very grateful to the supporters of our event. A very special thank you to USEC for making this conference possible through their generous support. USEC has sponsored our Celebration of Scholarship since its inception.

I would also like to thank the Deans of the Colleges of Arts and Sciences and Professional Studies for their financial support of the Dean's Award for Undergraduate Scholarship. A very special thank you, too, to the Board of Trustees for helping an outstanding student continue his or her conference experience through the new Trustees' Award.

I hope those who attend this event are impressed and inspired by the outstanding presentations of our students here at Shawnee State University. I hope you enjoy our "Celebration of Scholarship."

*Leta Alice Morris*

*On behalf of the College of Arts and Sciences, I want to welcome you to our ninth annual Celebration of Scholarship and to congratulate all of you who are participating in this unique event. The Celebration of Scholarship is part of Shawnee State University's commitment to promoting and supporting undergraduate research and scholarship. We believe that the opportunities and challenges afforded through engaging in research and presenting at a conference such as this prepares the student for the future be it in education, industry, or public service by helping cultivate writing, speaking, and critical thinking skills. The Celebration of Scholarship is an event that allows us to showcase the talents, initiative, and promise of our students.*

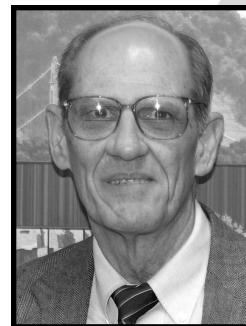


*We once again this year are awarding the "Dean's Award for Undergraduate Scholarship" in recognition of outstanding papers or projects presented at the conference. Cash awards are given to students from the College of Arts and Sciences and from the College of Professional Studies for papers or projects which embody the research and scholarship goals of the Celebration of Scholarship.*

*Once again, my congratulations to all of you who are participating. We wish you the best on this day and in all your future endeavors*

*Timothy E. Scheurer*  
Timothy E. Scheurer  
Dean, College of Arts and Sciences

*The Celebration of Scholarship Undergraduate Conference has well established itself as one of the highlights and most important events of our academic year. The Celebration is intended to offer opportunities for all students to share their interests, pose questions, and offer possible solutions to issues they have identified as important to society. The Celebration of Scholarship offers faculty and the academic community opportunities to learn directly from the students possible solutions to some of the important issues we have not been able to resolve during our tenure as academicians and community citizens.*



*Although outstanding papers and posters are selected for special awards, all students who participate as writers and presenters will be formally recognized and congratulated. After all, this is a very important part of our mission which includes "Recognize (and appreciate) the importance of knowledge, values, and cultural enrichment."*

*Thanks for this opportunity to show our appreciation. Thanks to everyone who supported and attended Celebration 2013!*

*James R. Kadel*  
Jim R. Kadel  
Dean, College of Professional Studies

## A Celebration of Scholarship 2013

Welcome to the ninth annual Celebration of Scholarship, a conference that highlights the scholarly, creative, and research activities of undergraduate students. We have an impressive group of approximately 200 students who value and appreciate learning and who want to share their scholarly activities with the university community. Join with us as we celebrate these students and their scholarship. We hope you enjoy the exciting program of topics, speakers, and the company of scholars.

In order to deliver a conference of this caliber, we require the assistance of several people and organizations. First, we thank the students and their mentors who are participating in the event. Their names are listed in the program. We also appreciate the financial support from the Shawnee State University Development Foundation and USEC. They have been very generous.

Others who supported the event in a number of ways include President Rita Rice Morris and her office; Vice President for Academic Affairs, Provost Dave Todt and his office; Dean Scheurer of the College of Arts and Sciences and his office; Dean Kadel of the College of Professional Studies and his office; SSU Printing Services; the Special Events Committee; the SSU Office of Communications; Elsie Shabazz; the Teaching and Learning Center; the Clark Memorial Library; Ariya Arnold; and Amanda Hutchinson.

Our gratitude and appreciation go to all who helped with set-up, organization, and awards for their assistance and encouragement.

### *The Coordinating Committee*

Pat Spradlin, Chair  
Ariya Arnold  
Leah Campbell  
Jeradi Cohen  
Sandra Cox  
Mary Cummings  
Vicci Felts  
Wendy Fleeman  
Amanda Hutchinson  
Jim Kadel  
Ed Keheres  
Allyson Klutenkamper  
Gayle Massie  
Jim McPherson  
Susan Montavon  
Preston Nichols  
Phyllis Noah  
Jennifer Pauley  
Jeremy Reed  
Debbie Risner  
Darrell Rudmann  
Marc Scott  
Tim Scheurer  
Elsie Shabazz  
Ann Marie Short  
Mistie Spicer  
Lavanya Vemsani  
John Whitaker



## A Special Thank You to USEC

Dan Rogers, General Manager of USEC, presents a gift in support of Shawnee State University's Celebration of Scholarship to President Rita Morris, on behalf of the Development Foundation.





## Program at a Glance

### Thursday, March 28, 2013

11 a.m. – 4 p.m.	Registration (lobby outside provost's office, Massie Hall)
Noon – 12:50 p.m.	Oral Presentations, Session 1
1 – 1:50 p.m.	Oral Presentations, Session 2
2 – 2:50 p.m.	Oral Presentations, Session 3
3 – 3:50 p.m.	Oral Presentations, Session 4
4 – 4:50 p.m.	Poster Session (University Center Lobby)
6 p.m.	Provost's Honors Dinner (for presenters, mentors, and moderators; University Center, Sodexo Ballroom)
7 p.m.	Welcoming Remarks Keynote Speaker, Matthew Wanat, Ph.D.* <b>More Than Meets the Eye: Close Reading and a Career in Film Scholarship</b> Open to the Public

### Friday, March 29, 2013

8 – 9 a.m.	Registration (Massie Hall Lobby, outside provost's office)
9 – 9:50 a.m.	Oral Presentations, Session 5 SSU Board of Trustees' Award, Sessions 5E & 6E (UC 214)
10 – 10:50 a.m.	Oral Presentations, Session 6
11 a.m. – Noon	Featured Speakers, Elaine Isbell, M.A. and Mary Wells, Ph.D.* (Clark Memorial Library, Flohr Lecture Hall) <b>Understanding the Psychology of Today's College Students</b>
Noon – 2 p.m.	SSU's Campus Cook-In (University Center Lobby and Sodexo Ballroom) Awarding of Door Prizes**

\* Conference participants—attendees and presenters—receive five tickets with attendance at speaker presentations for a chance at a door prize.

\*\* Attendees should receive a ticket after each session. The more sessions you attend, the more tickets you will receive. The drawing takes place in the University Center's Sodexo Ballroom during the Cook-In. The winning ticket MUST be presented at the time of the drawing.

**1A** ATC PLANETARIUM  
Moderator: Jerry Ross

**Dakota Robinson**

Mentors: Tim Hamilton & Dan Finnen

**The Spectroscopy of Stars**

Optical spectroscopy is used in analytical chemistry as well as astronomy to determine certain chemical and physical properties about a subject, whether it is a solution in the lab or a star in space. Absorption and emission lines in the spectrum are used to identify elements and their relative abundances. With Dr. Finnen in Chemistry, I have worked out a way to use a portable laboratory spectrograph with a telescope. This will give me a live spectrum of a star during observation. With Dr. Hamilton in Physics, I then use these spectra to measure stars' physical changes, such as the heating of gas disks, which are too small to view directly in an image.



**Chad Stump**

Mentor: Tim Hamilton

**Finding Exoplanets with a Small Telescope**

Extrasolar planets, or exoplanets, are planets orbiting stars other than our own sun. Since the first exoplanet was discovered about 20 years ago, more than 800 have been confirmed and many more promising candidates are marked for further observation every year, making it an active research field. This presenter is currently attempting to refine techniques to allow relative amateurs to participate in the search for these worlds, broadening our current capabilities and allowing for crowd-sourcing possibilities, as well as comparing any new data gathered on confirmed exoplanets with previously existing data in an effort to detect the presence of other bodies interacting with the exoplanets.



**1B** EDU 126  
Moderator & Mentor: Gay Lynn Shipley

**Staci Johnson**

**Notebook Organization**

Action research project on the effects of keeping an organized notebook on academic achievement.



**Allison Nagle**

**Nonlinguistic Representations**

This action research project focuses on the effects of student achievement through nonlinguistic representations.



**Katie Malone**

**Reading Comprehension in Sixth Grade English Language Arts**

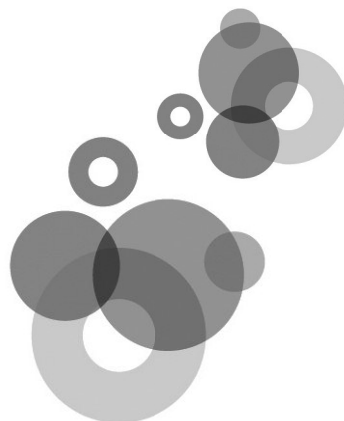
I will present two sixth grade language arts classrooms' test scores before and after students used reading strategies. This includes their pre-tests (before strategy instruction), practice tests (with strategy instruction), and post-tests (with strategy instruction). Also, I will include my anecdotal notes from observing classrooms. My research question is as follows: "Do reading strategies increase students' reading comprehension test scores?"



**Caitlyn Cortez**

**Struggling Readers: A Collection of Strategies**

Reading strategies are crucial for all ages, but are often overlooked for middle grade learners. This presentation examines three different reading strategies and their effectiveness with four struggling readers in the fifth grade. The primary researcher hopes that this action research project can help these students become engaged and motivated readers and raise awareness for educators about just how crucial this time period is for young readers.



**1C** UC 214  
Moderator: Brenda Haas

---

**Cynthia Arbogast, Courtney Green, Matthew Layne, & Brad Wenzell**

Mentor: Mikel Stone

**Comparison of an iPad-based Motor Learning Approach, a Sensory-Motor Based Approach, and a Combination Approach in Handwriting Development of Elementary School Children**

The purpose of this study is to investigate three intervention methods; the use of an iPad-based motor learning approach, a multi-sensory motor approach, or a combination of both methods in the improvement of handwriting skills of elementary school children who were identified with handwriting difficulties.



**Zachary Baird**  
Mentor: Eugene Burns

**Inflammatory Cardiac Remodeling**

This study was done in conjunction with Dr. Cheatham and Dr. Harmon of SOMC. The purpose of this study was to examine whether or not simply blocking the histamine arm of the inflammatory pathway, that appears to be activated as a result of acute myocardial infarction (AMI), will help to reduce the incidence of cardiac remodeling and the associated complications that accompany AMI.



**Ellen Berry**  
Mentor: Eugene Burns

**Derivation of a Clinical Decision Rule for Medical Clearance of the Ethanol Intoxicated Patient in the Rural Emergency Department. Thomas E. Carter DO FACEP, Colton Copley DO, Jerrad Nichol DO**

The intoxicated patient in need of medical clearance is a common presentation to the emergency department. In an effort to improve patient comfort and decrease costs and time to disposition in the population, we seek to derive a standard rate in our patient population of alcohol metabolism based on measured factors.



**1D** LIB 207  
Moderator: Shannon Lawson

---

**Anthony Cappel**  
Mentor: Clifford Poirot

**The Emergence of the People's Republic of China and the Complexity of the Sino-American Relationship**

I am writing this to analyze the relationship between the United States of America and China (PRC). The political situation is based upon China's decision to start building aircraft carriers with increased spending in all areas militarily, connections to the public debt of the United States, oil production and consumption for both nations. The content of this paper will connect to an international relationship between Pacific countries and a growing sense of anxiety and dispute in the region; projections follow based upon analysis.



**Nargiza Kadirova**  
Mentor: Rita Haider

**Model United Nations**

I have created a small Model United Nations (MUN) delegation at Shawnee State University, which is a new project for the University. We are representing Shawnee State at Dayton, New York, and Chicago MUN Conferences. The presentation is an ideal opportunity for me to tell about my project as well as my academic and professional achievement of being an international student at SSU.



**Amanda Maxwell**  
Mentor: Amr Al-Azm

**More than Oil: Diversifying the Economy of Saudi Arabia**

What is the first thing you think of when you hear "Saudi Arabia?" Is it oil, camels, or maybe even women's rights? This presentation will examine all sectors of the economy and display how Saudi Arabia plans to diversify their economy. Higher education, human resources, environmental policy, and infrastructure all play a unique and crucial role to Saudi Arabia's globalization. Lastly, what do these upcoming changes mean for U.S. Foreign Policy?



**1E** MAS 207  
Moderator: Kathryn Locke

**Matt Jenkins, Derek Massie, & Luke Purpero**  
Mentor: Doug Sturgeon

### **Creative Learning Instructive Techniques**

We examine the idea of allowing students the least restrictive environment for teaching, choosing fun and interactive ways that get the student involved in learning. Our presentation is based on action research findings and observation which involved pre- and post-data on individual students.



**Samantha Strickland**  
Mentor: Doug Sturgeon

### **Positive Teaching Strategies for Preschool Children with Special Needs**

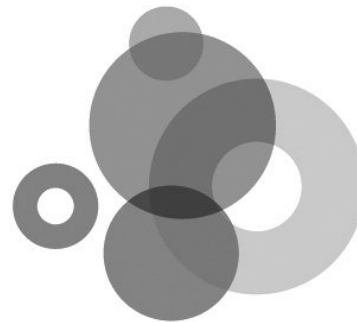
This presentation is based on action research data collected in a preschool for children with special needs. Student performance data and scholarly inquiries were collected over a period of 85 hours. The exploration comprised of hands on activities and analysis of teaching methods. The focus of this collection is on techniques for positive teaching concerning preschool children who struggle with Oppositional Defiance Disorder (O.D.D.). Implementation of curriculum that is developmentally appropriate and responsive to the child's needs is essential. The data collected reveal before and after results to conclude whether the evidence-based curriculum is likely to benefit the child.



**April McCleese**  
Mentor: Patric Leedom

### **Inclusion: The Social Perspective Addressing the Social Stigma Associated with Children with Disabilities**

This presentation examines the social issues associated with children with disabilities, how they are being addressed in today's classrooms, as well as how children with disabilities are perceived by society. This presentation will discuss issues such as the importance of educating society on the various characteristics of children with disabilities, eliciting sensitivity towards their exceptional needs by creating a more culturally sound and accepting environment, and ensuring that children with disabilities have the least restrictive environment while at school, as these are all crucial to these students' success. This presentation will draw attention to inclusion practices in modern academia, address its effectiveness regarding how children with special needs are getting what they need from the inclusive classroom, both academically and socially, along with solutions for social success.



## **Oral Presentations**

**Session 2 1 – 1:50 p.m.**

**2A** ATC PLANETARIUM  
Moderators & Mentors: Kurt Shoemaker & Jeff Bauer

**Travis Bailey**

### **Structural Evolution of the Mississippi Valley Graben**

My presentation is concentrated on the Mississippi Valley Graben and its effects on the local topography. In particular, it is about the Structural Evolution of the region, including some shared field experiences I acquired in that area.



**Cora Essman**

### **New Madrid Seismic Zone: The Reelfoot Rift and Deep Structures**

The purpose of the course was to explore, in the field, the New Madrid Seismic Zone, the Reelfoot Rift, and deep structures that go along with it. During my presentation I will show you the areas that I explored and explain what caused the changes to the surface of the earth.



**Anissa Blankenship**

### **Regional Extent and Historic Earthquakes of the New Madrid Seismic Zone**

Explore the fascinating history of one of nature's most devastating disasters and its future destructive possibilities. Join me as I present the United States' more active fault lines located in the central US: The New Madrid Seismic Zone.





**Sara Pate**

Mentor: Pat Spradlin

### **Teaching Compare and Contrast Writing Skills to High School Students**

This unit, created in the fall of 2012 during my Language Arts Methods course, references Peter Smagorinski's method to present the concept of compare and contrast. It is aligned to the 11-12th grade standards of the Common Core. In this unit, I planned for teaching the basics of compare and contrast thinking, emphasizing structure and its use into writing. I will share many activities that use compare and contrast in different ways and span multiple media and technology options. Parts of this unit were taught in my field placement during my LA Methods course, and I will conclude with reflections about that experience.



**Amanda Hutchinson**

Mentor: Pat Spradlin

### **Annotating Texts to Improve Students' Reading Comprehension**

This study examines the effects of text annotation on the reading comprehension abilities of middle school reading students loosely based on methods described in Carol Porter-O'Donnell's "Beyond the Yellow Highlighter: Teaching Text Annotation Skills to Improve Reading Comprehension." This study examines students' reading comprehension abilities through general reading assessment both before and after the implementation of the annotation method.



**Kyle Horner**

Mentor: Ken Carlson

### **Incentives to Study**

Students often have a hard time studying; my cooperating teacher tries to convince them to study at least 15 minutes each night. However, when he asks them after a quiz if they studied, the majority of them have not. I offered the students a reward in exchange for a paragraph summary in their own words. I collected data of the scores of the students who did the extra credit and compared it with the students who did not to see if my incentive helped improve the students' scores.



**Nicole Payton**

### **Casting a Spell on Your Students**

Why is it so important that we know how to spell? Learning how to spell takes time and often causes frustration, so why bother? As a student, why do I need to waste my time learning how to spell when I could be using that time doing something else? Besides, does learning how to spell really affect my everyday life? Students, of all ages, ask themselves these questions day after day. They tend to not see the importance of learning how to spell nor do they have a desire for doing so. Little do they know, spelling is not only studied during the reading and language arts portion of the school day. It is in every single subject that we study. In fact, spelling is intertwined with every single thing we do both inside and outside of our school environment.



**Madison Rapp**

### **Strategies to Improve Spelling**

The purpose of this study is to see which strategies promote and encourage students to increase their weekly spelling test scores. The study was completed in a first grade classroom, and focused on which strategies used throughout the week help improve weekly spelling test scores.



**Aiqin Zhu**

### **Vocabulary**

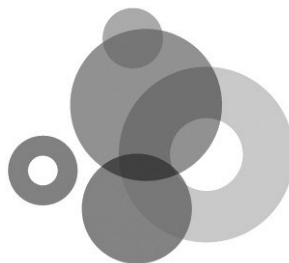
Vocabulary is one of the most important components of language. Therefore, this researcher is convinced that the focus of vocabulary and learning is an important and meaningful topic of research. The research would be focused upon the research question: What instructional strategies are most effective to increase students' scores in vocabulary?



**Teresa Welch**

### **Can vocabulary graphic organizers increase student achievement in science?**

The purpose of this action research project is to determine if vocabulary graphic organizers can increase student achievement in science.



**2D** UC 214  
Moderator: Jim Simmons  
Mentor: Eugene Burns

---

**Jason Ballengee**

### **Ultrasound Nerve Block Regional Anesthesia in Emergency Departments**

The presentation will be a review of a study by Dr. Carter D.O. and colleagues. The presentation will discuss the process of establishing the study, explaining the study in detail, and will indicate the current phase of the study.



**Melissa Saab**

### **Ultrasound Guided Peripheral Nerve Blocks in the Emergency Department**

The presentation is a synopsis of the research on this topic conducted by Dr. Thomas E. Carter and his colleagues in the Southern Ohio Medical Center Emergency Department.



**April Li & Samantha Walls**

### **Group A Streptococcus-induced Activation of Matrix Metalloproteinases**

Streptococcus pyogenes, or group A streptococcus, causes many diseases ranging from common pharyngitis (or strep throat) to post-infectious glomerulonephrosis. Much of the pathogenesis caused during or after streptococcal infections is due to the ability of the bacteria to activate a class of proteases known as matrix metalloproteinases (MMPs). These enzymes upon activation degrade extracellular matrix components leading to extensive soft body tissue destruction. This study compares the natural activity of MMPs to that induced by S. pyogenes infection in various types of human cells. We hope to definitively analyze and quantify the pathogenic activation of MMPs in all relevant tissue types (i.e., tissues infected by Streptococcus pyogenes).



**2E** LIB 207  
Moderator & Mentor: Ken Carlson

---

**Olivia Mullins**

### **External Motivation and Homework**

This presentation covers a proposed idea that students in a 9th grade algebra class are more likely to complete their homework assignments when motivation is given. The motivations include a free breakfast and winning a contest.



**Tyler Sheeley**

### **Flipping in a Science Classroom**

Flipping in a science classroom is an action research project that seeks to find time for inquiry activities in a high school classroom by flipping the lecture outside of class as homework.



**Janet Pennington**

### **Balls Do More than Bounce**

This presentation is on how to motivate classroom participation by tossing the ball. Students are more eager to participate in class discussions if they get to play with the ball while answering the questions. The toss and catch also allows for physical movement when they are required to sit still for long periods of time. This catching and throwing process did increase classroom participation.



**Nicholas Hamilton**

### **Learning by Doing**

This action research project revolves around the suggestions of students. A survey conducted at the beginning of field placement found that many of the students suggested that they themselves learn better by “doing,” so I put their belief to the test. Every lesson taught integrated some sort of activity completed by the students in the classroom. Overall, scores and grades were gathered at the start of the research process and intermittently thereafter to see if a correlation existed between activity integration and grade changes.



**2F** MAS 207  
Moderator & Mentor: Isabel Graziani

---

**Jeffrey Collins**

### **The Development of Art in the 19th Century from Rococo to Modernity**

My proposal is to trace the development of art, starting in the late 18th century period of Rococo art, and examine the development and influences that brought art into modernity in the late 19th century. We look closely at the influences of Fragonard and Boucher (Rococo), Winckelmann and Jacques Louis David (classic), Courbet (Realist) and the influences of Baudelaire and Constantine Guys (Modernity), and then look at the Impressionists, especially Manet, and trace modernity as influenced by Baudelaire. We look at art by Fragonard, Boucher, David, Courbet, Guys, Manet, and others.



**Anne Marie Daly Hyden**

### **Gender Stereotypes as Reflected in Advertisement**

This presentation addresses many issues regarding the common stereotypical images of women in mainstream media that have become the norm in American society. We have been so relentlessly exposed to constant illustration of negative gender roles that our perception of women has been altered to a frightening degree of indifference and desensitization. Our society functions in part as a reflection of the social attitudes and values as dictated by the influential nature of advertisement. It is important to recognize the socially detrimental patterns as advertised and change how the media represents women.



**Brittany Day**

### **Juan De Valdes Leal: Master of Macabre**

Throughout his career, artist Juan de Valdes Leal enjoyed success and a comfortable living; he was a central figure of Spanish culture who helped Seville become an important art center. Both productive and versatile, the large number of commissions Valdes Leal received included altarpieces, engravings, and frescoes, but perhaps the work he is best known for is vanitas paintings. He often worked on a large scale to create somber paintings which he inventively heightened by using exotic colors, dramatic light, and lively brushwork. How then did Valdes Leal transcend the genre of still life painting to reflect the intensely religious spirit of

seventeenth century Spain? A look at a pairing of paintings *In Ictu Oculi* and *Finis Glorae Mundi* and another work titled *Vanitas* reveal the unique qualities of Valdes Leal's work and how his paintings have managed to withstand the test of time.



**2G MAS 438**

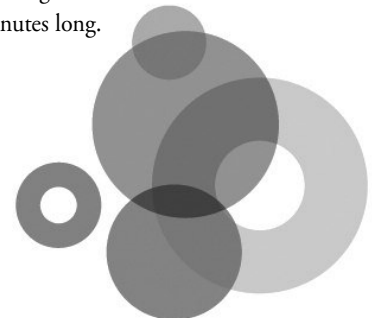
Moderator & Mentor: Christine Raber

**Halee Beam, Misty Brown, & Lindsay Maples**

### **Promoting Best Ability to Function: Innovative Dementia Care Interventions**

The purpose of this study is to better understand the use of dementia specific maintenance programs (MP), an innovative rehabilitation approach to support best ability to function for residents with dementia in assisted living facilities. The researchers believe that information gained in the study could provide valuable information about the use of maintenance programs in assisted living.

This session is 45 minutes long.



## **Oral Presentations**

**Session 3 2 – 2:50 p.m.**

**3A ATC PLANETARIUM**

Moderator: Kurt Shoemaker & Jeff Bauer

**Ron Greene**

Mentor: Jeff Bauer

### **Cretaceous Interior Seaway/Mississippi Embayment**

This presentation is an oral description of the cretaceous interior seaway and the Mississippi embayment.



**Tim Blankenship**

Mentor: Kurt Shoemaker

### **Fossils and Paleoenvironments of the Coon Creek Formation**

I will be discussing the fossils and paleoenvironments related to the Coon Creek formation and why it is one of the best fossil sites in the United States. I may also speak of the Cretaceous Interior Seaway that created these fossil beds.



**Franklin Wallbrown**

Mentor: Kurt Shoemaker

### **Ancestral Drainage and Ancient Divides**

I explore the geomorphological (think landscape) changes in the Mississippi River Basin through the Neogene to the Quaternary period (23.03 million years ago to the present).



**Brady Evans**

Mentor: Kurt Shoemaker

### **Mississippi Delta Evolution**

I discuss the Mississippi Delta Evolution, in particular Delta Switching, a comparison of rivers, waves, and tides that dominated deltas. I will also discuss specific field research that I conducted while on a Mississippi Delta trip.



**Aubrie Hamer**  
Mentor: Sandra Cox

### **The Effects of Fantasy Literature on a Child's Cognitive Development in Dealing with Trauma**

My presentation is about how using children's literature through the books, *The Graveyard Book* by Neil Gaiman, and C.S. Lewis', *The Lion, the Witch and the Wardrobe*, can potentially help a child who is dealing with trauma of any sort. I explore the role of these fantasy novels and the different types of trauma that will help aid the child in dealing with their life trauma.



**Elizabeth Miller**  
Mentor: Julia Coll

### **House of Spirits: The Latin Perspective of Feminism and Classism**

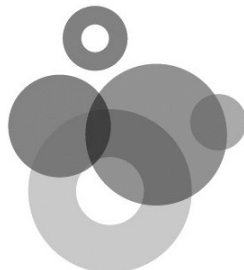
Through analysis of *The House of Spirits* by Isabel Allende, I will explore women's identity within Latin American society and how the characters in this novel fight to change that role. By exploring this, I will also relate their struggle to the issue of class the peasants face in the novel. This will create discussion of both feminism and classism themes within Latin American literature and how the author emphasizes these themes effectively. In order to explore this topic, I will not only read *The House of Spirits*, but also academic articles that discuss feminism and classism in Latin American countries. The goal of this presentation will be to identify how Isabel Allende reveals feminism and classism problems in Latin America with her literature.



**Jennifer Larrigan**  
Mentor: Julia Coll

### **The Mother/Daughter Relationship in *Like Water for Chocolate***

The research in this presentation is focused on the mother/daughter relationship in *Like Water for Chocolate* written by Laura Esquivel, including the cultural rule that prohibits the youngest daughter of a family of four from marrying while the mother is living.



**Tessa Thurman**

### **Literature Circle: Comprehension Strategy**

Comprehension skills are essential to the academic success of students. If a student can read fluently, but cannot comprehend what is being read, it greatly affects their ability to master the subject matter. The purpose of this research project is to determine whether or not literature circles as a comprehension strategy have a positive impact on students' reading comprehension skills.



**Erica Holsinger**

### **Graphic Organizers in Mathematics**

I will present a PowerPoint presentation on the research I conducted in a 5th grade Math class. Three different graphic organizers were tested on students to see if it helped them improve their ability to solve word problems. A pre-test and post-test as well as a pre-survey and post-survey were given at the beginning and end of the research project as well as self-surveys each week to check their understanding and feeling of the strategies.



**Brittany Duduit**

### **Learning in a Flash**

In today's education system, there is a heavy emphasis on the importance of reading. Skills that need to be gained to read successfully are being instilled in learners as young as preschool. The integration of reading is being intertwined in all content areas to ensure that students are receiving full exposure to this growing importance in our education. Students too often seem to struggle in different areas of reading. This presentation is based off a research project I am currently conducting. The purpose of the study is to see if implementing flash cards for a learner struggling mastering sight words will produce a greater outcome of understanding.



**Jessica Baumgardner**

### **I See, I Do, I Learn!**

The purpose of this study was to see how technology and hands on activities increased sight word comprehension and learning. By implementing differentiated instruction that is also developmentally appropriate, is it possible to create a better way to teach sight words?



**3D** UC 214  
Moderator & Mentor: Eugene Burns

---

**John Harcha & Cody Lewis**

### **Comparing Attachment of Wild Type and Mutant Bordetella Bronchiseptica to Dog and Pig Cells**

Bordetella bronchiseptica is a gram negative rod shaped bacterium that causes infectious bronchitis in several animal species including dogs and pigs. The purpose of this research was to compare the attachment of wild type B. bronchiseptica (strain VPI-Fe1) with a laboratory constructed mutant strain (strain 1K1). PTK-75 (pig nasal turbinate fibroblasts) and CF52 (dog tracheal fibroblast) were grown in chamber slides. Mutant and wild type Bordetella were then added to the cells in the chamber slides and allowed to attach. Non-attached bacteria were washed away. Once the attachment process was completed and the slide was stained, the bacteria were then counted under a microscope for a total of 50 cells. Once the mutant and wild type bordetella are counted for the PTK-75 and CF52 cells they will be compared to one another looking at the overall number of bacteria and how the bacteria were attached at the cellular level.



**Corey Johnson**

### **Outcome of Cardiac Catheterization Patients with Slight Troponin Elevations and Normal CKMB Levels**

This work was done in conjunction with Dr. Ross, Dr. Banaszak, and Dr. Leutz from Southern Ohio Medical Center. The purpose of this study is to determine the outcomes of cardiac catheterization in patients that are admitted with slight troponin elevations, normal CKMB levels, and received catheterization treatment regardless of other recommendations.



**3E** KRI 255  
Moderator: Sharon Eaves

---

**Dylan Frank & Mary Inskip**

Mentor: Jerry Ross

### **The Physics 2201 Lab Manual**

Shawnee State University is in need of a single uniform Physics 2201 Lab manual. This presentation shows how we are working toward that goal. This group has discovered various labs from other universities and has used them for inspiration to create, test, and write new labs that are fitted to our specific curriculum. The labs are then given to the students to assist them in learning various concepts from the chapters. We've developed a partnership with Universities across the Midwest to create a comprehensive laboratory component to our introductory physics courses. These materials are designed to make each section more uniform.



**April Li**  
Mentor: Jerry Ross

### **Ionization Losses in Electric Propulsion Rockets**

Description: Hall thrusters, since their invention in the 1950s, have been popularly utilized for their efficient propulsion capability in a variety of space-faring satellites. However, due to the nature in which the thrust is created, some efficiency is lost within the system. Throughout the decades, extensive research has led to some technological improvements, but overall, success has still been limited. The goal of this study is to analyze why these efficiency losses, especially those due to ionization of the propellant, occur and to determine the limit of efficiency that can be regained.



**3F** LIB 207  
Moderator & Mentor: Ken Carlson

---

**Kendra Clark**

### **The Drive of a Math Student**

I am in the middle of a research project concerning 8th graders and what kind of projects and classes will drive the students to participate and be motivated in mathematics. I will use different strategies such as bonus points, class activities, rewards, etc.



**Brandon Hall**

### **Guided Notes and In-Class Reading**

I will discuss the multiple positives of using the text book aside with guided notes. I will explore the facts that it aids to content reading literacy skills, keeps the students and teacher on the same page, and teaches students how to interact with texts. I will compare my finding to other methods of teaching social science.



**Coley Warner & Garry Wright**

### **Examining the Effectiveness of Individual Work in Social Studies Classrooms**

This presentation will view work done by sophomores in an American History classroom. One class has done all work individually, while the other class has worked in various group settings. Will working in groups prove to be more effective than working alone?



**Bradley Liston**

### **The Effects of Technology in the Classroom**

Throughout the school year there is a question that teachers need to be able to answer: Do students progress further and perform better on tests with the use of technology? Or does the method of lecture and worksheets produce the same results? That is the focus of my research, spending three weeks using the standard method of lecture and worksheets, and then three weeks of using technology based instruction.



**3G** MAS 206

Moderator: Allyson Klutenkamper

**Tracy Peters**

Mentor: Melody Sands

### **Drugs, Crime, and Poverty in Southern Ohio**

Fighting the drug abuse problem in Scioto County. This presentation details the journey and struggles families face in dealing with drug addiction. Through her research, Tracy plans to start a non-profit organization aimed at assisting families and addicts. This research is part of the Appalachian Ohio Think Tank option in English 1105.



**Courtney Mayes**

Mentor: Sandra Cox

### **Women and Substance Abuse**

This presentation is about women who are abusing or are addicted to drugs or alcohol. The research gives the profile of women abusers, and a demonstration of the need for treatment, proposed treatment centers and relapse prevention centers. The research is also presented with personal experiences, statistics, and information from the Diagnostic and Statistical Manual of Mental Disorders.

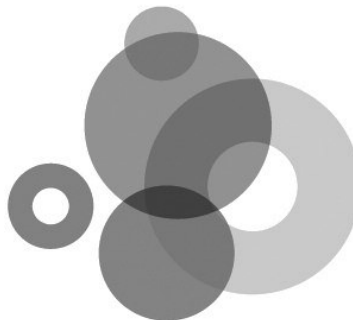


**Stephanie Leslie**

Mentor: Sandra Cox

### **Welfare Revisions**

Today, welfare is seen much differently than in the past. In the past, it was intended for help in a time of need, but according to the increase of government aid, welfare has not only been used as a crutch, but has become a lifestyle. I propose some revision to government assistance by discussing two of the most widely used government assistance programs, and speaking a little about their history and present statistics. Also, I will be speaking about some proposed solutions to decrease welfare fraud and abuse.



## **Oral Presentations**

**Session 4 3 – 3:50 p.m.**

**4A** ATC PLANETARIUM

Moderator: Kurt Shoemaker & Jeff Bauer

**Samantha Bassitt**

Mentor: Kurt Shoemaker

### **Salt Domes**

I am studying the Salt Domes in the New Orleans, Gulf of Mexico region, and more specifically, how the Triassic Age evaporates form into Salt Domes and when the deformation occurred. The presentation is also how it allows petroleum and other natural gases to get trapped next to the domes themselves.



**Kayla Schoettle**

Mentor: Kurt Shoemaker

### **Along the Mississippi: Old River Control, the Morganza Spillway, and the Atchafalaya Basin**

The control of the Mississippi River's flooding and natural pathway has become a site of much controversy. By using the Old River Control System and the Morganza Spillway, the US Army Corps of Engineers has been able to redirect the natural flow of the Mississippi River. This has had much impact on the area, including on the Atchafalaya River and Basin.



**Raymond Swanson**

Mentor: Jeff Bauer

### **Flood Control in New Orleans with Reference to Katrina**

My presentation and research focus primarily on the flooding of New Orleans during hurricane Katrina; however I also strive to examine flood control before the storm, and any possible measures we could take to lessen flooding problems in the future. I plan to take an in-depth look at the Army Corps of Engineers, as well as other agencies responsible in planning the flood control systems set up at the time of hurricane Katrina, which failed so spectacularly. I plan to use my first-hand experiences in the field to give my audience a better understanding of the increased safety measures and improved construction techniques put into place after the Katrina catastrophe, as well as surveying the massive damage caused by the previous systems failing.



**4B** EDU 124

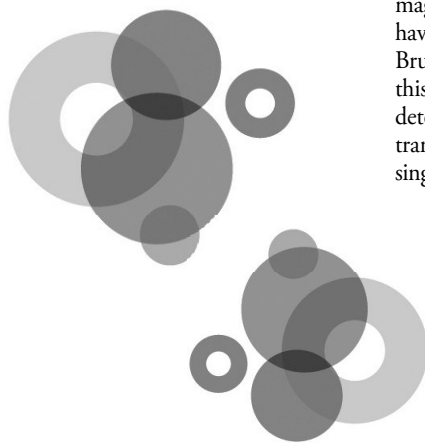
Moderator: Glenna Heckler-Todt

### **Brittany Brigner & Macarena Sanchez-Studebaker**

Mentor: Gay Lynn Shipley

#### **How to Engage Students**

Participants learn quick research-based strategies to engage students in the content area of mathematics, English, language arts, and social studies. These strategies are based on Marzano's techniques of inconsequential competition, mile-a-minute, games, and movement. Be ready to engage!



**4C** UC 214

Moderator: Phil Blau

### **Sonja Porter**

Mentor: Daniel Finnen

#### **Determination of Ethanol in Beverages Using NMR Spectroscopy**

Nuclear magnetic resonance (NMR) spectroscopy is traditionally used in organic chemistry to determine the structure of molecules. For example, proton NMR ( $^1\text{H}$  NMR) can be used to determine how the atoms are connected in a molecule by interpreting the chemical shift, splitting pattern, and integration area of each peak in the  $^1\text{H}$  NMR spectrum. NMR spectroscopy can also be used as an analytical instrument in order to obtain quantitative information from a wide variety of substances. For example, the components of a mixture can be determined using  $^1\text{H}$  NMR by using the ratio of specific peak areas in the  $^1\text{H}$  NMR spectrum. In this particular project, we used our Bruker Fourier 300 NMR spectrometer to determine the ethanol content in a variety of alcoholic beverages. The water/ethanol ratio was calculated using the peak areas of the OH protons of water and ethanol and the methylene ( $\text{CH}_2$ ) protons of ethanol.



### **Sarah Ruggles**

Mentor: Daniel Finnen

#### **Determination of Paramagnetic Susceptibility by Proton NMR**

Nuclear magnetic resonance (NMR) is routinely used to determine the structure of organic molecules. For example, proton NMR ( $^1\text{H}$  NMR) typically provides information about how the atoms are connected in a molecule by observing the chemical shift, splitting pattern, and integration of each peak in the  $^1\text{H}$  NMR spectrum. NMR can also be used as an analytical tool in order to determine quantitative information such as the magnetic properties of metal ions. Normally, a Guoy balance or an Evans balance is used to determine the magnetic properties of a substance; however, since we do not have either of these instruments we can utilize our new Bruker Fourier 300 NMR to obtain the same information. In this particular project, we used t-butanol as a reference to determine the molar magnetic susceptibilities of various transition metals by monitoring the shift of the t-butanol singlet caused by the introduction of a paramagnetic substance.



**Kayla Altman, Aubry Fowler, Matt George, Jon Porter, & Sonja Porter**

Mentor: Christopher Meade

### **In Oculo Transplantation: Modeling Disease Pathology**

This research aims to generate a cell culture model that can be used to study neurodegenerative diseases. This model, called In Oculo transplantation, is unlike most cell culture models because this one involves the implantation of embryonic brain tissue into the anterior chamber of an eye. Isolated brain regions of mice embryos are harvested to implant into the eyes of living mice. This allows for more extensive research to be conducted on the brain tissue in the eyes, because the tissue continues to grow and be fed by the vessels in the eye for the lifespan of the host mouse. This creates a much longer life span for the brain tissue, compared to typical cell cultures in use today.



**4D** LIB 207

Moderator & Mentor: Ken Carlson

**Sarah Bell, Justin Malone, & Daniel Sand**

### **The Benefits of Attending National Conferences as an Undergraduate Teacher Candidate**

This presentation provides students and faculty with the benefits of attending conferences both at the state and national level. The importance of teacher candidates becoming members of their specialized professional association (SPA) are also discussed. Personal testimonies from student teachers who attended a National Science Teacher's Association (NSTA) conference in Indianapolis, Indiana (2012), and will present at the 2013 NSTA national conference, are included.



**4E** KRI 255

Moderator & Mentor: Roberta Milliken

**Mark Fackler, Michelle Holzworth, & Sarah Johnson**

### **A Shakespeare Panel**

Presenters share some thoughtful insights into William Shakespeare's tragedies and what it means to be a tragic hero. This is a 45 minute session.



**4F** MAS 206

Moderator: Marc Scott

**Rebecca Finley, Danielle Joseph, Wesley McManis, & Stacey Reno**

Mentor: Debra Scurlock

### **Impact of Occupation-Based Groups on the Development of Self Concept in Children**

*Purpose:* To ascertain the effectiveness of an occupation-based after-school program for improving self-concept in children, ages five through eight.

*Methods:* Thirty randomly selected children in first and second grade (ages 5-8) from Portsmouth Elementary School attended a 22-week occupation-based after-school program twice a week for an hour each session. The Pictorial Scale of Perceived Competence and Social Acceptance for Young Children was administered to all participants at the beginning (pre-test) and end (post-test) of the program.

*Results:* Data from pre-test and post-test are analyzed using a sign-test method.



**Audrey Howard**

Mentor: Scott Douthat

### **Exploring Nonverbal Communications and Micro Expressions**

Nonverbal communications are visual representations of how a person feels regardless of their words. These nonverbal communications can be body language or represented through speech containing nonverbal elements called paralanguage, which can be expressed consciously or unconsciously through pitch, volume and intonation of speech. Micro expressions are a part of nonverbal communications and are involuntary facial expressions that last from 1/25 to 1/15 of a second according to the emotions experienced.



**4G** MAS 109

Moderator & Mentor: Julia Coll

**Jimena Kilgallion**

### **Using Skype for Learning Foreign Language**

No Description Provided.





## Heather Brewer

Mentor: Amanda Hedrick

### Books In Action

Stop by and see Books In Action. This poster will show ways which books help students other than just in learning to read and write. Use books to help a child understand the world around them and even the “world” within them. Learn how to help children get the most from their books.



## Jessica Fritz, Matt Kottonbrook, Nena LaMonte, & Lacy Neice

Mentor: Ryan Walker

### Downward Dog Proprioceptive Neuromuscular Facilitation

The purpose of this study is to analyze the ability of yoga exercises such as the downward facing dog to facilitate muscle activity of the lower trap and serratus anterior while inhabiting over dominate muscle activity of the upper trap that is commonly seen in patients with shoulders impingement.



## Joan Green, Brittney Griffith, & Nathan Yates

Mentor: Ryan Walker

### Effectiveness of Open versus Closed Kinetic Chain Exercises in the Management of Patellofemoral Pain Syndrome

The presentation compares Open Kinetic Chain and Closed Kinetic Chain exercises for patients with Patellofemoral Pain Syndrome by looking at pain, function, and strength. To test this we use a prospective cohort study and a two-way ANOVA utilizing Bonferroni corrected p-values.



## Gail Thompson

Mentor: Ryan Walker

### Effects of Dry Needling and Acupuncture Applied to the Lumbar Region in Patients Aging 25-40 with Chronic Low Back Pain

This project evaluates immediate effects of two different modes of acupuncture, one being acupuncture and other being dry needling on motion-related pain and lumbar mobility in chronic back pain patients compared to a controlled procedure.



## Teresa Welch

Mentor: Dr. Sandra Cox

### Embracing the Holocaust in Education using Lois Lowry's *Number the Stars*

I have written a paper discussing Lois Lowry's *Number the Stars* and examine the necessity for teachers of all grades to embrace the Holocaust and implement discussions that encourage students to open their minds to the value of human life. My poster will have different topics of discussion using Lowry's novel and how to implement them into the learning of the Holocaust in the classroom for different age levels.



## Luke Carver, Ryan Darnell, Keisha Holbrook, & Tabitha Potter

Mentor: Ryan Walker

### Lateral Epicondylitis

We discuss the pathology of this condition and explain our methodology for treatment. We ask the question: Does isotonic strength training improve grip strength and decrease pain that modalities alone for the treatment of lateral epicondylitis?



## Kelly Brown & Taylor Jodrey

Mentor: Doug Sturgeon

### Letter Recognition

This presentation is based on action research findings dealing with special needs preschool children. Each presenter focused on teaching recognition of letters on their assigned child. Pre- and post-data was collected regarding each child. Each teacher candidate utilized a research based instructional technique with their child to improve the child's achievement level.



## Christine Berning, Carolyn Patten, & Elana Spencer

Mentor: Doug Sturgeon

### Letter Recognition

We are presenting a variety of different tactile activities to increase letter recognition. We begin by assessing our action research special needs preschool students on letters the can already recognize. We will follow up with the same assessment to measure the progress of skills acquired during our time with them.



**Nikki Howard, Kaila Ward, & Sarah Williamson**

Mentor: Sharon Eaves

### **A Naturalistic Sleep Study and the Relationship between Sleep and Working Memory**

We conducted a correlational study between amount of sleep and performance of working memory. Comparisons were made between average amount of sleep, desired average amount of sleep, quality of sleep, and how each related to working memory performance. The results of each working memory task and the participants overall scores of working memory capacity were examined and correlated with total amount of sleep for each participant. All collected data were analyzed using SPSS.



**Cassie Kight**

Mentor: Amanda Hedrick

### **The Power of Music**

My poster provides researched information about the benefits of music in the lives of young children both in academics and in everyday life. My poster also provides examples of how music can be used in the classroom and at home. This poster hopefully provides individuals, both teachers and parents, with new ideas of how to use music with young children and answer the question, why is music so important to young children.

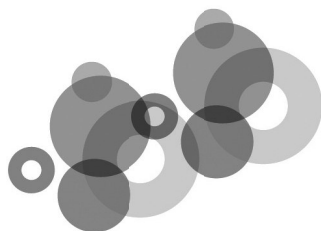


**Cassidy Fox**

Mentor: Catherine Bailey

### **Preventing Post-Operative Infections**

Evidence-based health care is about incorporating the best available evidence in clinical decision-making. This project explores an evidence-based approach to pre-operative prevention of infection associated with operative procedures. A variety of literature was reviewed providing a best practice approach to this costly problem.



**Stephanie Arbogast, Megan Clay, & Molly Shreffler**

Mentor: Amanda Hedrick

### **Promoting Diversity Appreciation through Multicultural Literature**

We are each unique in our own way. This is something we have heard since we were young, but do we really believe it? Do children in today's society understand the diverse world they live in and appreciate its value? The makeup of schools in the United States is changing drastically. Each classroom contains students that are diverse in culture, religion, socioeconomic status, family, and languages spoken. With these changes inside of schools, along with the world around them, it is important for young children to grasp an understanding of these differences. Young children having an understanding and appreciation of diversity not only allows for mutual respect for one another in the classroom, but also may help to foster a transformation in society's attitude towards diversity. Teachers should incorporate multicultural children's literature as a regular aspect of literature instruction to encourage the development of an understanding and appreciation of diversity.



**Trisha Adkins, Anthony Edler, & Ashley Vaughn**

Mentor: Amanda Hedrick

### **Put Play in Your Day!**

In this presentation, we discuss the importance of play the healthy development of young children. We also talk about ways to incorporate play into the everyday curriculum that are both meaningful and beneficial to the students and teachers, because the best way to teach a young child is through play!



**Ashley Fischer**

Mentor: Catherine Bailey

### **Rheumatoid Arthritis Diet**

Evidence-based health care is about incorporating the best available evidence in clinical decision making. This project explored an evidence-based approach in management of severity of symptoms through diet in those with rheumatoid arthritis. A variety of literature was reviewed providing a best practice approach to this costly problem.



**Ciera Locke**

Mentor: Virginia Pinson

### **Squeaky Clean**

This poster focuses on the health care related problem of dental education not being introduced to children in their early years in order that the potential for problems as adults are decreased. Possible recommendations and resolutions are included.



**Jerica Mayes**  
Mentor: Bob Deal

### **Shawnee Campus Tree Inventory**

At the time of the creation of Shawnee State University the existing campus had about 25 species of woody plants. Today the number of species is over 120. This has come about because of establishment of a campus tree committee that took on the task to properly manage existing trees and enhance the diversity of species as money became available. With the increase in tree numbers, dispersed over the expanded campus, it became necessary for management purposes to conduct an inventory of all woody plants and map their location. The purpose of this project was to accomplish those aims and to provide required information for the institution to apply for membership with the national Arbor Day Foundation as one of the relatively few campuses recognized as Tree Campus USA. For Celebration of Scholarship I will be presenting my senior project of inventorying campus tree diversity, abundance, health, and location.



**Tyler Hollar, Libby Hooper, Jeremiah Morrow, & Kayla Tolbert**

Mentor: Ryan Walker

### **Treatment of Cervicogenic Headaches**

Physical therapy methods of treating Cervicogenic headaches surrounding a particular case study and how it can relate to a bigger population.



**Justin Allen, Brittany Bakenhaster, Brittany Barta, & Anthony Recker**

Mentor: Ryan Walker

### **Trochanteric Bursitis**

This poster presents different treatment options for Trochanteric Bursitis.



**Kayla Hosey**

Mentor: Catherine Bailey

### **The Use of Professional Interpreters**

Evidence-based health care is about incorporating the best available evidence in clinical decision making. This project explored an evidence-based approach to the complex problem of communicating in the health care setting with patients who have limited English speaking skills. A variety of literature was reviewed providing a best practice approach to this prevalent problem.



**Hannah Gephart, Whitney Mullins, Randall Ratcliff, & Shawn Ratcliff**

Mentor: Ryan Walker

### **What is the Effectiveness of Barefoot Training Versus Orthotics for Correcting Excessive Pronation in the Young Adult Population?**

Our study aims to investigate whether Sole Support orthotics or barefoot training would be more effective in correcting excessive pronation of the foot, an impairment commonly associated with Plantar Fasciitis, in subjects between the ages of 20-30.

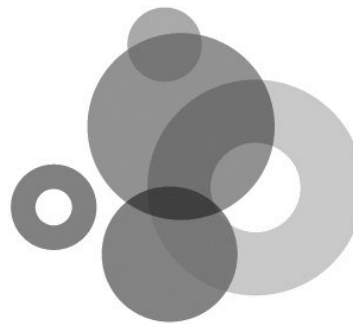


**Jessica Clark, Chad Crawford, Amber Duch, & Ben Ward**

Mentor: Ryan Walker

### **Will Vibratory Stimulation and Wrist Splinting have an Effect on Grip Strength?**

Our group set out to find a conservative treatment option for that of Carpal Tunnel Syndrome. Splinting has been shown to be successful in relieving patients of their symptoms accompanied by Carpal Tunnel. Vibratory Stimulation has been proven to be an effective feedback mechanism for patients. Therefore we thought creating a splint that was both a splint and that contained vibrators inside would help a patient maintain a neutral position of the wrist, thus decreasing symptoms and increasing their grip strength.



## **Provost's Honors Dinner**

6 – 7 p.m.

UNC, Sodexo Ballroom

By invitation only: Student presenters, faculty mentors, moderators, and honored guests.

# Keynote Speaker

7 p.m. UNC, Sodexo Ballroom

**“More Than Meets the Eye: Close Reading and a Career in Film Scholarship”**

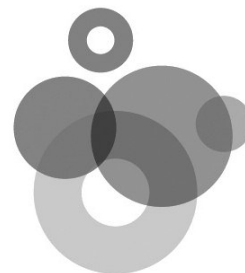
## **Matt Wanat** Ph.D.

Assistant Professor of English, Ohio University,  
Lancaster



*Growing up in rural Ohio at the onset of the VHS revolution, I found myself in a curious position. On one hand, I had a kind of access to movies that my parents hadn't. On the other, there seemed to be few popularly available means of making sense of what I was seeing. Consequently, stumbling through the video collection at my local library became a little like stumbling through a collection of rare artifacts. Films like Hitchcock's Psycho and Bergman's The Virgin Spring, the first times I saw them, troubled me not solely with their content, but also because of their stylistic unfamiliarity. By junior high, I found myself not just watching films, but also studying their aural and visual patterns. Certain scenes which moved me would be watched over and over again, partly because "rewind" meant they could be. Little did I know it at the time, but what seemed a slightly neurotic pastime would later become for me a career in literary and film scholarship. "More Than Meets the Eye: Close Reading and a Career in Film Scholarship" is partly a discussion of my journey toward a profession as a teacher and scholar, but it is also a celebration of the cinematic scene and career choices, each closely examined—an exercise in close reading of film and of life choices.*

Matt Wanat is an assistant professor of English at the Lancaster regional campus of Ohio University, where he teaches composition, film, literature, and literary and cultural theory. Wanat's scholarship examines intersections of narrative, genre, and culture in the areas of twentieth-century American literature and cinema studies, and his scholarly interests range from western American literature and film to Appalachian studies to localism and sustainability. Wanat has presented and/or published essays on Sam Peckinpah, Katherine Anne Porter, Wendell Berry, Jack Schaefer, Don Siegel, and Clint Eastwood. Recently, his interests have included coordination of campus sustainability curriculum and events, including a campus vegetable garden worked by students, the produce from which helps to feed the hungry in Fairfield County, Ohio.



## 5A EDU 124

Moderator & Mentor: Jeradi Cohen

**McKenzie Ellis**

### **Alphabet Games and Letter Sorts: A Study on Their Impact on Students Alphabet Recognition Skills**

This presentation looks at the impact of alphabet games and letter sorts in building a group of five kindergarten students' alphabet recognition skills. This entire study was conducted over the course of six weeks. Each instructional strategy was implemented for three weeks each. The first three weeks was dedicated to alphabet games, and the second set of three weeks was used for letter sorts. The purpose of this study was to determine if either instructional strategy would prove more effective than the other in building students' alphabet recognition skills.



**Anna Fuchs**

### **Learning the Alphabet: Manipulative Instruction Verses Traditional Classroom Instruction**

This study examines the effectiveness of a hands on approach to learning in the form of manipulative instruction, compared to traditional classroom instruction for learning alphabet recognition on students in a kindergarten classroom.



**Ashley Hamilton**

### **Effects of Manipulative Word Study in a First Grade Class**

This study is focused on using a Word Study Strategy based on manipulative instruction and its effects on students as compared with traditional sight word instruction. In this study, a selected group of students who are struggling with sight words is involved with interactive Word Study lessons for three days a week. Every week, the students are tested on the number of sight words they have learned and compared with the students in the control group who took the words home and focused on rote memorization. By increasing the number of sight words that students can identify, students are able to read grade-level text more fluently and accurately.



## 5B KRI 155

Moderator: Jennifer Pauley

**Janine Grey**

Mentor: Allyson Klutenkamper

### **Reclamation: The story behind the documentary**

Reclamation is a video and photographic documentary on drug abuse rehabilitation based at Freedom Hall in Piqueton, Ohio. It follows several residents through their journey to recovery. I will be discussing this and other works that lead me to creating this documentary.



**Aerrielle Jones**

Mentor: Allyson Klutenkamper

### **Portals**

The series of images I will be displaying is meant to allow the viewer access into my mind. I want to show through my work that I might seem completely random at times on the outside; but on the inside, I have a lot of thought process to go through. Portals will reflect my vision when I look into a mirror because I do not see my own reflection. I see a gateway into my mind and think about where I would like to walk along, what I have not seen in a while or what would be really nice to happen across. It is my greatest hope this project is successful in showing the audience my inner self.

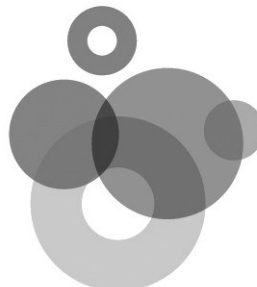


**Greg Frasier**

Mentor: Allyson Klutenkamper

### **Demolished: Photographing Emptiness**

This photography presentation features original student artwork that deals with the common practice of leaving lots empty long after a building has been demolished. A physical loss of meaning occurs as a result and through the use of voids in the images this emptiness is articulated with the photographic medium. By confronting the viewer with a loss of visual content that imitates the loss of architecture, this work aims to engage the viewer in a search for meaning and, ultimately, leaves the result of that journey open to interpretation.



**5C** KRI 250  
Moderator & Mentor: Lavanya Vemsani

---

**Norris, Packard, Radak, & Weese**

### **World a Century Ago: Democratic Movements and State Formations**

Twentieth century is symptomatic of individual rights and democratic movements across the world. A number of successful democratic as well as totalitarian states emerged during the first quarter of the 20th century. In order to illustrate the trials and tribulations of these political changes in the world, the present panel undertakes an examination of four countries: America, India, China and Germany. The presentation begins with an examination of devastating and phenomenal effects of World War I for the United States and how the American society changed leading up to the 1920 elections. The second paper examines the events in India brought about by the public's cries for self-rule and British reluctance. The third paper will focus on analyzing China during and after the First World War emphasizing the Democratic movements and political changes of a totalitarian regime. The last paper outlines the nonlinear and complex socio-political changes that took place in Germany before and after WWI.



**5D** MAS 214  
Moderator & Mentor: Roberta Milliken

---

**Crystal Carver, Heather Clifton, Danielle Cook, Noah Fannin, Elizabeth Miller, & Maria Lancianese**

### **Celebration of Stratford: From Page to Stage**

For the past sixty years, The Stratford Festival, based in Ontario, has dazzled audiences with spectacular plays by magnificent playwrights. Alluding to Shakespeare's hometown of Stratford, England, this festival features several of Shakespeare's most celebrated works. In the fall of 2012, six students ventured to visit this critically acclaimed affair. This presentation will offer audiences a glimpse into the city of Stratford in addition to a description of the festival, itself. See photographs from inside the costume shop and props department. Learn about the feature performance of the festival, Shakespeare's, *Much Ado about Nothing*. Find out what made this interpretation of Shakespeare's classic play, truly, one-of-a-kind. History buffs, English majors, theater enthusiasts, and travel lovers alike will benefit from this Celebration of Stratford.



**5E** UC 214 **Trustees' Award Session 1**  
Moderator: Sandra Cox

---

**Mary Kincaid**

Mentor: Neil Carpathios

### **War Photography: Truth or Fiction**

Violent imagery is a visceral experience. It changes us, stays in our memories, and forces us to make choices on a fundamental level. The image of bodies strewn across a field after one of the bloodiest battles of the Civil War, the young girl fleeing a napalm attack, badly burned and screaming, the heroes of Iwo Jima proudly raising the American flag, the hooded figure standing on a crate surrounded by water holding electric cords; these images are iconic in the lexicon of our nation. They not only act as a mirror for the times and places they represent but they tell the American story, our story. These images speak to us, scare us, and make us want to help. Some of these images do not depict reality. It is the unreality of these images that will be discussed in this presentation.



**Allison Dunn**

Mentor: Sandra Cox

### **Multiculturalism in Literacy Books**

Using multi-cultural books is a comfortable way for the students to learn about each other while embracing their own heritage. Teachers can create an anti-bias classroom that will encourage the students to be anti-bias outside the classroom as well. We will discuss how the book, *Grandfather Counts*, can be used in the classroom as a way to learn about other cultures.



**Janell Pisegna**

Mentor: Rhoni Maxwell-Rader

### **Occupational Hazards and the Development of Cancer**

This presentation will examine and relay information concerning occupational hazards that put employees at an increased risk for the likelihood of the employee developing cancer. Specifically, the presentation will outline and examine statistics and research studies regarding the occupational hazards of workers who handle, are exposed to, or are employed in a field of work involving formaldehyde usage, pesticide usage, and industrial mining.



**Elijah Gerlach & Brandon Mays**

Mentor: Eugene Burns

### **Protein Profiling of *Bordetella Bronchiseptica* to Identify Attachment Capabilities**

*Bordetella bronchiseptica* is a gram-negative bacterium that causes acute tracheobronchitis in canines and atrophic rhinitis in swine. During previous studies, variability in attachment was noticed between different strains of *B. bronchiseptica*.

Attachment is mediated by the use of fimbriae, filamentous hemagglutinin and pertactin. Previous researchers developed a mutant that exhibited changed attachment abilities. The purpose of our research is to identify and profile the protein(s) that is/are changed in the mutant. In order to do so samples of the wild type strain and the mutant strain were electrophoresed. The electrophoresed gels separated the proteins by weight. What we are looking for in the gels are bands of proteins that are different between the two strains. After further analysis, we discovered just that. A protein, located between 75-95 kDa, was found in the wild type that was not in the mutant strain. The next stages of research are to single out the particular protein and test it to see if it relates to attachment in the host species. This will be done through the introduction of certain antibodies that would react with proteins associated with attachment.



**5F** MAS 110  
Moderator: Shannon Lawson

**Kyle Purdin**  
Mentor: Derek Jones

### Alkanethiolates on Gold Self-assembled Monolayers (SAMs)

Long chain alkanes with a terminal end thiol group will attach to the surface of a gold electrode in an ordered fashion. The gold electrode must first be heated with an ultra pure flame so that it cools into a gold(1 1 1) crystalline structure. The long chane alkanethiolate is attached, and evaluated for use with instrumentation.



**Johnathon Clevenger**  
Mentor: Andrew Napper

### Theoretical and Experimental Methods of Determining the Rotational Barrier in N,N-dimethylformamide

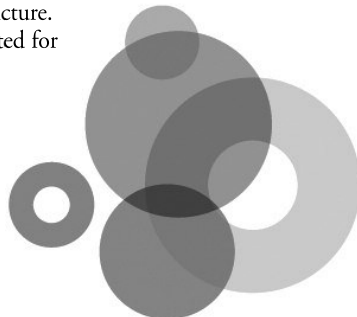
NMR spectroscopy was used to determine the rotational barrier about the C-N bond in N,N-dimethylformamide by examination of the line-width as a function of temperature. These results were compared to theoretical calculations using Hartree-Fock and density functional methods.



**Nick Ball**  
Mentor: Bob Deal

### Diversity and Population Densities of Insect Species from early to Mid Spring in an Area Woodland

This short duration project aims to sample in microhabitats, such as under rocks, under bark of dead trees, on living trees and spring growing herbaceous species, and in near ground level air insects present at each weekly sampling from mid-March to the end of April. The aim is to determine those species first emerging at each sampling and to determine population trends in those species through the course of the survey. Collected insects will be retained for the SSU permanent insect collection.



## Oral Presentations

Session 6 10 – 10:50 a.m.

**6A** EDU 124  
Moderator & Mentor: Jeradi Cohen

### Odessa Reed

#### Which Strategy has the Greatest Impact on Words per Minute: Readers' Theatre or Timed Repeated Readings?

This study focuses on two strategies: Reader's Theatre and Timed Repeated Readings. Reading connected text fluently is an essential, life-long skill that all students must master in order to be successful not only in academics, but also in everyday life (Lo Y., Cooke N. & Starling A., 2011, p. 115).

Unfortunately, many students do not possess the skills needed in order to be successful readers. Deficiencies in fluency have become a pandemic issue throughout the nation causing students to become disengaged while reading. Struggling readers not only experience the frustration of reading, but also tend to have dwindling grades and low self-esteem. Therefore, it is imperative that educators provide strategies that effectively build fluency skills. This study examines two questions: Which strategy has the greatest impact on words per minute: Readers Theatre or Timed Repeated Readings? Which strategy was preferred by the students?



Cassie Erlenwein

### Second Grade Reading Fluency

This presentation is based on a study that was performed in attempt to identify the most effective ways to teach second grade struggling readers fluency development. The study examined four students' fluency rates after participating in three different fluency strategies. Students' fluency rates from each strategy were compared to their fluency rates of other strategies applied during the study. These findings were used to conclude the most effective strategy to use while teaching fluency to second grade struggling readers.



Morgan Hall

### Effectiveness of Reading Fluency Strategies in a Second Grade Classroom

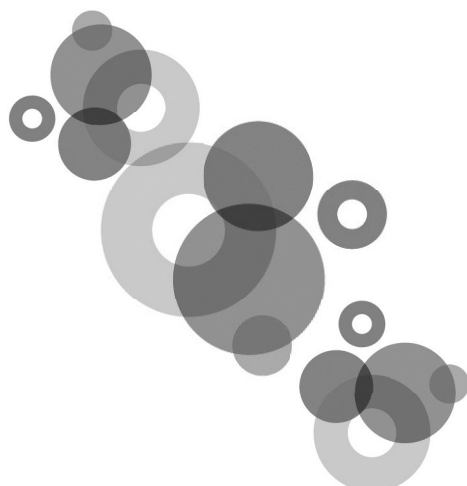
Can students who are considered at risk level readers, ascertained by testing scores, overcome expected outcomes of failure? Can educators implement strategies to help at risk students become fluent in reading? If so, which fluency strategy is most effective in helping at risk students succeed? I chose to conduct an action research project focusing on the implementation of two fluency strategies in a second grade classroom with a group of five at risk students. The two specific strategies, utilized during the action research project, were choral reading and readers' theater.



Holly Selanders

### The Effects of Flash Cards and Board Games on Students Struggling with Consonants Blends

Are board games or flashcards more effective when teaching students consonant blends? My action research presentation will look at the effects of both flashcards and board games when teaching elementary students beginning, three-letter s, and final consonant blends.



6B KRI 155

Moderator: Chris Kacir

Caleb Sibert

Mentor: Rhoni Maxwell-Rader

### Exploring Alcohol Abuse: The Process of Creating an SSU-Centered Public Service Announcement

For Health Psychology (Fall, 2012), I made an alcohol abuse public service announcement (PSA) tailored to SSU students as part of a supplementary Honors project for the class. In this presentation, I explore the process that was involved in creating the PSA with a focus on explaining the decisions that I made, the research behind those decisions, and the components that were involved in the process. I will follow this part of the presentation with the actual viewing of the PSA.



Tayyab Aziz

Mentor: Rita Haider

### Burning Paradise on Earth: The Historical and Political Status of the Kashmir Conflict

Kashmir is a land of natural beauty but burns in the fire of bullets and shells for the last six and half decades. The land of Kashmir has a history of about two thousand years. The conflict arose between Pakistan and India after the partition of the sub-continent in 1947 when the British withdrew from the Sub-continent. The Kashmir conflict is not only a bone of contention between Pakistan and India but is also important for the peace and stability of the South Asia. This study is an effort to explain the historical and political status of Kashmir conflict and the role of United Nation and the United States in the solution of Kashmir conflict so far.



Rebecca Nelson

### An Analytical Approach to Generational Poverty in Appalachia

Appalachia is a region rich in culture, national importance, and natural resources yet poverty still engulfs the majority of its population. An analysis of the factors contributing to this continuous loop will reveal a systematic cycle of medical, economic, educational, and infrastructural neglect from the rest of the country outside of the Appalachia. The analysis will also include possible solutions to these negative factors such as ways to increase and maintain economic growth, resolutions for a healthier society, and steps towards educational success.





**6C** KRI 250  
Moderator: Janice Johnson

---

**Heather Kremin**

Mentors: Dr. Barhorst & Dr. Carter

**Parameters of Emergency Response in the Field**

I will be discussing an EMT-based study question: Should medics in the field stay and proceed with cardiac arrest and other life threatening cases or load patients and proceed directly to the hospital? Which is the most life-preserving route? This discussion will include the write up procedure for submitting the study to the IRB as well as the method of study, including data collection and a prediction of outcome.



**Nicholas Fannin**

Mentor: Virginia Pinson

**Accrediting Bodies in Health Care**

Accreditation is a critical strategic component for healthcare organizations in today's highly competitive healthcare market. This presentation will explore the top accrediting bodies in healthcare today and the importance of national accreditation for healthcare organizations in the United States.



**Kevin Colley**

Mentor: Virginia Pinson

**Shawnee SportsNet**

Shawnee SportsNet is a radio announcing program that allows students and parents of players to listen to live baseball games on the Internet so they can keep up with Shawnee State baseball. This session will introduce attendees to our process.



**6D** MAS 214  
Moderator: Neil Carpathios

---

**Zack Burton, Dana Dotson, & Andrew McClave**

Mentor: Neil Carpathios

**Photo-Based Creative Non-Fiction**

This presentation serves as an exploration of personal essay writing using photography as the primary inspiration. Presenters will discuss the importance of their sourced photography as well as the various challenges and strategies associated with writing from memory.



**6E** MAS 108 Trustee's Award Session II  
Moderator: Sandra Cox

---

**Panel Deliberation Time**



**6F** MAS 110  
Moderator: Xiodan Huang

---

**Sarah Bell, Justin Malone, & Daniel Sand**

Mentor: Loretta Harvey

**iPads for Education**

Come see how the use of iPads in the classroom can engage students to make content come alive. Personal testimonies from student teachers will be shared, as well as several applications that are useful for teachers. Be sure to bring your device!



**6G** ATC 134  
Moderator: John Whitaker

---

**Pam Pritchett**

Mentor: John Whitaker

**The Alternating Series Test**

This is an expository talk about series in which the definition of a convergent series and examples will be covered. Alternating series including the proof of the alternating series test and examples will be emphasized.



**Cassie Stamper**

Mentor: John Whitaker

**Power Series Representation**

This is an expository talk about power series representations of functions. We will give sufficient conditions for when a function can be represented by a power series along with examples. An example of a function that does not have a power series representation will also be examined.

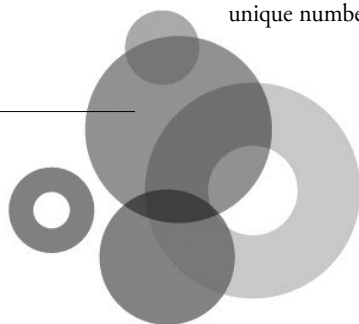


**Jaxon Current**

Mentor: James Hudson

**The Order of it All**

How do we look at the order of anything? We can talk about alphanumeric, and its reverse when talking about sorted lists. We do not, however, seem to have a way to represent what order things are in if they are not in a sorted fashion; and, as we all know, most things we want to keep track of, or look at, do not occur sorted. With this in mind, I explore different ways we currently addressed this problem, and found them all lacking certain properties. I'll discuss the solution I developed. It allows us to denote the order of a set by calculating a unique number for its arrangement in a reversible process.



# Featured Speakers

11 a.m. Clark Memorial Library, Flohr Lecture Hall

**Understanding the Psychology of Today's College Students**

## **Elaine Isbell** M.A.

Clinical Psychologist and Professor, Psychology, Sinclair Community College



## **Mary Wells** PhD

Assistant Professor, Psychology, Sinclair Community College



*To successfully engage a new generation of learners, it is important for educators to understand the motivational and psychological factors that drive the behaviors of college students. This presentation gives audience members an opportunity to better understand the psychology of the current generation of college students based on empirical evidence and research findings. Personality traits, demographics, learning preferences, educational choices and expectations, and mental health issues are examined. Classroom and teaching implications are explored and discussed. Participants have opportunities to assess their own knowledge and share their experiences and challenges.*

**Elaine Isbell** is presently a professor of psychology at Sinclair Community College in Dayton, Ohio, where she develops and facilitates courses in psychology and stress management. She has also worked as a clinical psychologist in the Dayton area and provided outpatient services in both individual and group therapy. She received her M.A. in clinical psychology from St. Mary's University in San Antonio, Texas, and a B.A. in psychology from St. Mary's, graduating summa cum laude.

Prior to being hired as an assistant professor, **Mary Wells** was employed with the psychology department at Sinclair Community College as an annually contracted faculty member for eight years. She has been an active member, teaching a variety of traditional and online classes and participating in online course development. Her graduate work in clinical psychology was completed at Ohio University. Prior to her teaching career, she worked as a clinician specializing in the treatment of persons with severe and chronic mental illnesses. In addition to teaching, Mary currently serves as a Faculty Fellow for Sinclair's Center for Teaching and Learning and Campus Co-lead for the Completion by Design Initiative. In addition to her research interests in the psychology of millennial college students, Mary also is very interested in how to increase college completion rates and create contextualized program pathways for college students.

# SSU's Campus Cook-In

Noon – 2 p.m.

University Center Lobby and Sodexo Ballroom  
Open to **all** members of the SSU community.

# Awarding of Door Prizes

Noon

Note: The door prizes will be awarded during the Campus Cook-In in the UC Sodexo Ballroom. The winning ticket must be presented at the time of the drawing to collect the prize.

# Table of Presentations

Thursday	A	B	C	D	E	F	G
<p>Noon – 12:50 p.m.</p> <p><b>Session 1</b></p> <p>M=Moderator</p>	<p><b>The Spectroscopy of Stars</b> Robinson <b>Finding Exoplanets with a Small Telescope</b> Stump</p> <p>M: Ross ATC Planetarium</p>	<p><b>Notebook Organization</b> S Johnson <b>Nonlinguistic Representations</b> Nagle <b>Reading Comp. in 6th Grade Eng/Lang. Arts</b> K. Malone <b>Struggling Readers: A Collection of Strategies</b> Cortez</p> <p>M: Shipley EDU 126</p>	<p><b>Comparison of ... Handwriting Dev. of Elem. School Children</b> Arbogast, Green, Layne, Wenzell <b>Inflammatory Cardiac Remodeling</b> Baird <b>Derivation of a Clinical Decision Rule for Med. Clearance ...</b> Berry</p> <p>M: Haas UC 214</p>	<p><b>Emergence of the People's Republic of China &amp; the Complexity...</b> Cappel <b>Model United Nations</b> Kadirova <b>More Than Oil: Diversifying the Econ. of Saudi Arabia</b> Maxwell</p> <p>M: Lawson LIB 207</p>	<p><b>Creative Learning Instructive Techniques</b> Jenkins, Massie, Purpero <b>Positive Teaching Strategies for Preschool Children...</b> Strickland <b>...Addressing the Social Stigma Assoc. with Children with Disabilities</b> McCleese</p> <p>M: Locke MAS 207</p>		
<p>1 – 1:50 p.m.</p> <p><b>Session 2</b></p> <p>M=Moderator</p>	<p><b>Structural Evolution of the Mississippi Valley Graben</b> Bailey <b>... The Reelfoot Rift &amp; Deep Structures</b> Essman <b>Regional Extent &amp; Historic Earthquake of the New Madrid ...</b> A. Blankenship</p> <p>M: Shoemaker &amp; Bauer ATC Planetarium</p>	<p><b>Teaching Compare and Contrast Writing Skills to H.S. Students</b> Pate <b>Annotating Texts to Improve Students' Reading Comprehension</b> Hutchinson <b>Incentives to Study</b> Horner</p> <p>M: Risner EDU 124</p>	<p><b>Casting a Spell on Your Students</b> Payton <b>Strategies to Improve Spelling</b> Rapp <b>Can Vocabulary Graphic Organizers Increase Student Achievement in Science?</b> Welch</p> <p>M: Shipley EDU 126</p>	<p><b>Ultrasound Nerve Block Regional Anesthesia in ...</b> Ballengee <b>Ultrasound Guided Peripheral Nerve Blocks ...</b> Saab <b>... Strep.-Induced Activ. of Matrix Metalloproteinases</b> Li, Walls</p> <p>M: Simmons UC 214</p>	<p><b>External Motivation and Homework</b> Mullins <b>Flipping in a Science Classroom</b> Sheeley <b>Balls Do More Than Bounce</b> Pennington <b>Learning by Doing</b> N. Hamilton (10)</p> <p>M: Carlson LIB 207</p>	<p><b>The Development of Art in the 19th Century from Rococo to Modernity</b> Collins <b>Gender Stereotypes as Reflected in Advertisement</b> Daly Hyden <b>Juan de Valdes Leal: Master of Macabre Day</b></p> <p>M: Graziani MAS 207</p>	<p><b>Promoting Best Ability to Function: Innovative Dementia Care Interventions</b> Beam, Brown, Maples</p> <p>M: Raber MAS 438</p>
<p>2 – 2:50 p.m.</p> <p><b>Session 3</b></p> <p>M=Moderator</p>	<p><b>Cretaceous Interior Seaway/Mississippi ...</b> R. Greene <b>... Paleoenvironments of Coon Creek Form.</b> T. Blankenship <b>Ancestral Drainage &amp; Ancient Divides</b> Wallbrown <b>Mississippi Delta Evolution</b> Evans</p> <p>M: Shoemaker &amp; Bauer ATC Planetarium</p>	<p><b>... Fantasy Lit. on a Child's Cognitive Dev. in Dealing with Trauma</b> Hamer <b>House of Spirits: The Latin Perspective of Feminism &amp; Classism</b> E. Miller <b>Mother Daughter Relationship in <i>Like Water for Chocolate</i></b> Larrigan</p> <p>M: Holtman MAS 109</p>	<p><b>Literature Circle: Comprehension Strategy</b> Thurman <b>Graphic Organizers in Mathematics</b> Holsinger <b>Learning in a Flash</b> Duduit <b>I See I Do, I Learn</b> Baumgardner</p> <p>M: Shipley EDU 124</p>	<p><b>... Attachment of Wild Type &amp; Mutant Bordetella Bronchiseptica to Dog &amp; Pig Cells</b> Harcha, Lewis <b>Outcome of Cardiac Catheterization Patients with Slight Troponin Elevations &amp; Normal CKMB Levels</b> C. Johnson</p> <p>M: Johnson UC 214</p>	<p><b>The Physics 2201 Lab Manual</b> Inskeep, Frank <b>Ionization Losses in Electric Propulsion Rockets</b> Li</p> <p>M: Eaves KRI 255</p>	<p><b>The Drive of a Math Student</b> K. Clark <b>Guided Notes &amp; In-Class Reading</b> B. Hall <b>... Individual Work in a Soc. Studies Class.</b> Warner, Wright <b>Effects of Technology in the Classroom</b> Liston</p> <p>M: Carlson LIB 207</p>	<p><b>Drugs, Crime, Poverty in Southern Ohio</b> Peters <b>Women and Substance Abuse</b> Mayes <b>Welfare Revisions</b> Leslie</p> <p>M: Klutenkamper MAS 206</p>
<p>3 – 3:50 p.m.</p> <p><b>Session 4</b></p> <p>M=Moderator</p>	<p><b>Salt Domes</b> Bassitt <b>Along the Mississippi: Old River Control, the Morganza Spillway, and the Atchafalaya Basin</b> Schoettle <b>Flood Control in New Orleans with Reference to Katrina</b> Swanson</p> <p>M: Shoemaker &amp; Bauer ATC Planetarium</p>	<p><b>How to Engage Students</b> Brigner, Sanchez-Studebaker</p> <p>M: Heckler-Todt EDU 124</p>	<p><b>... Ethanol in Beverages Using NMR Spectroscopy</b> S. Porter <b>... Paramagnetic Susceptibility by Proton NMR</b> Ruggles <b>In Oculo Transplantation...</b> Altman, Fowler, George, J. Porter, S. Porter</p> <p>M: Blau UC 214</p>	<p><b>Benefits of Attending National Conferences as an Undergraduate Teacher Candidate</b> Bell, Malone, Sand</p> <p>M: Carlson LIB 207</p>	<p><b>A Shakespeare Panel</b> Johnson, Holtzworth, Fackler</p> <p>M: Milliken KRI 255</p>	<p><b>Impact of Occupation-Based Groups on the Development of Self-Concept in Children</b> Finley, Joseph, McManis, Reno <b>Exploring Nonverbal Communications and Micro Expressions</b> A. Howard</p> <p>M: Scott MAS 206</p>	<p><b>Using Skype for Learning Foreign Language</b> Jimena Kilgallon</p> <p>M: Coll MAS 109</p>
<p>4 – 4:50 p.m.</p> <p>UC 104</p> <p><b>Poster Session</b></p>	<p>All poster participants, both single and group, must be present.</p> <p>Poster clean up begins at 5:30 p.m.</p>	<p>Open to the public</p>					
<p>UC Sodexo Ballroom</p>	<p><b>Provost's Honors Dinner (RSVP Only):</b> Participants, Faculty Mentors, Session Moderators, Administration, and Invited Guests) 6 – 7 p.m.</p> <p><b>Keynote Dinner Speaker</b> Matthew Wanat</p> <p><b>More Than Meets the Eye: Close Reading and a Career in Film Scholarship</b> 7 p.m. • Open to the public</p>						

## Table of Presentations

Friday	A	B	C	D	E	F	G
9 – 9:50 a.m. <b>Session 5</b>  M=Moderator	<b>Alphabet Games and Letter Sorts...</b> Ellis  <b>... Manipulative Instruction vs. Traditional Classroom Instruction</b> Fuchs  <b>... Manipulative Word Study in a First Grade Classroom</b> A. Hamilton  M: Cohen EDU 124	<b>Reclamation: The Story Behind the Documentary</b> Grey  <b>Portals</b> Jones  <b>Demolished: Photographing Emptiness</b> Frasier  M: Pauley KRI 155	<b>World a Century Ago: Democratic Movements &amp; State Formations</b> Norris, Packard, Radak, Weese    M: Vemsani KRI 250	<b>Celebration of Stratford: From Page to Stage</b> Carver, Clifton, Cook, Fannin, Miller, Lancianese    M: Milliken MAS 214	<b>Trustees' Award Session</b> <b>War Photography ...</b> Kincaid  <b>Multiculturalism in Literacy Books</b> Dunn  <b>Occupational Hazards &amp; Dev. of Cancer</b> Pisegna  <b>Protein Profiling of Bordetella ...</b> Gerlach, B. Mays  M: Cox UC 214	<b>Alkanethiolates on Gold Self-Assembled Monolayers (SAMs)</b> Purdin  <b>... Rotational Barrier in N,N-dimethylformamide</b> Clevenger  <b>Diversity &amp; Population Densities of Insect Species...</b> Nick Ball  M: Lawson MAS 110	
10 – 10:50 a.m. <b>Session 6</b>  M=Moderator	<b>Which Strategy has the Greatest Impact ...</b> Reed  <b>Second Grade Reading Fluency</b> Erlenwein  <b>... Fluency Strategies in a 2nd Grade Class.</b> M. Hall  <b>Effects of Flash Cards &amp; Board Games ...</b> Selanders  M: Cohen EDU 124	<b>... Process of Creating an SSU-Centered PSA</b> Sibert  <b>... Historical &amp; Political Status of the Kashmir Conflict</b> Aziz  <b>... Approach to Generational Poverty in Appalachia</b> Nelson  M: Kacir KRI 155	<b>Parameters of Emergency Response in the Field</b> Kremin  <b>Accrediting Bodies in Health Care</b> Nicholas Fannin  <b>Shawnee SportsNet</b> Colley    M: Johnson KRI 250	<b>Photo-Based Creative Non-Fiction</b> Burton, Dotson, McClave    M: Carpathios MAS 214	<b>Trustees' Award Session</b>        M: Cox MAS 108	<b>iPads for Education!</b> Bell, Malone, Sand      M: Huang MAS 110	<b>The Alternating Series Test</b> Pam Pritchett  <b>Power Series Representation</b> Cassie Stamper  <b>The Order of it All</b> Current   M: Whitaker ATC 134
11 a.m. – Noon Clark Memorial Library Fiohr Lecture Hall	<p><b>Featured Speakers</b> Elaine Isbell &amp; Mary Wells</p> <p><b>Understanding the Psychology of Today's College Students</b> Open to the public</p>						
Noon – 2 p.m. University Center Lobby & Sodexo Ballroom	<p><b>SSU's Campus Cook-In</b></p> <p>Drawing for door prizes begins at 12:15 p.m. Must be present to win!!!</p>						

## SSU Board of Trustees' Award for The Celebration of Scholarship

The SSU Board of Trustees has established a Trustees' Award as part of the Shawnee State University Celebration of Scholarship. The award goes to an outstanding student, based on research that is investigative, project-based, inquiry-based, open-minded and/or exploratory. The student receives up to \$1,000 toward expenses related to attending the National Conference for Undergraduate Research or other discipline-specific or professional conference.

As Board chair, Dan Mooney states, "As trustees, we are extremely proud of the students who participate and present their work — and the faculty mentors who help make it all possible. We wanted to develop a way to further recognize these outstanding students by making it possible for them to continue their conference experience."